

State of Wyoming Corner Record

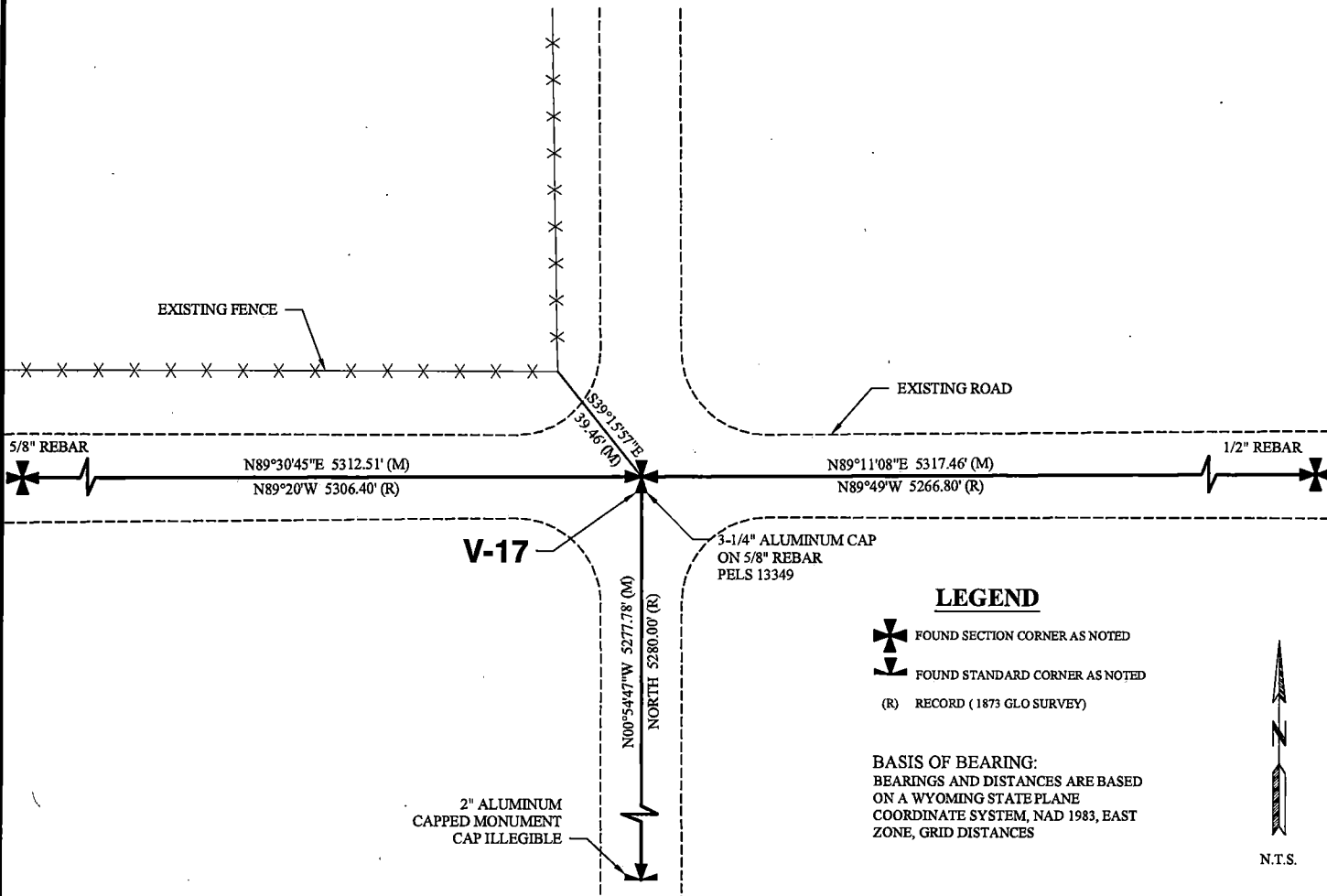
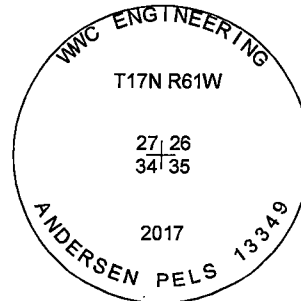
(In compliance with the CORNER PERPETUATION AND FILING ACT, Wyoming Statutes, 1997, Section 33-29-140, et seq., and the Rules and Regulations of the Board of Registration for Professional Engineers and Professional Land Surveyors)

Reverse side of this form may be used if more space is needed.

Record of original survey and citation of source of historical information (if corner is lost or obliterated.) Description of corner monumentation evidence found and/or monument and accessories established to perpetuate the location of this corner. Sketch of relative location of monument, accessories, and reference points with course and distance to adjacent corner(s) (if determined in this survey). Method and rationale for reestablishment of lost or obliterated corner.

EVIDENCE RECORD: 1873 GLO Survey: North between sections 34 & 35, 80.00 chains. Lime stone 20"x14"x4", 12" deep marked with 1 notch on south side and 2 notches on east side for the corner to sections 26, 27, 34 & 35.

EVIDENCE FOUND: November 2017: Lime stone from 1873 GLO survey not found. Accepted north-south and east-west road intersection as best available evidence for the corner to sections 26, 27, 34 & 35. Set a 3 1/4" aluminum cap marked as shown on a 5/8" rebar, 24" long, 6" below gravel road surface.



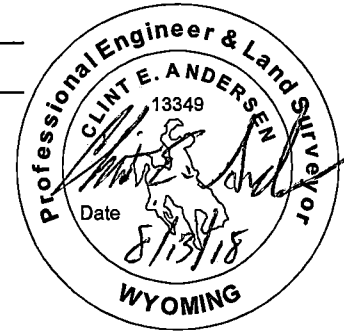
Date of Field Work: November 15, 2017 Office Reference: 2017-135

CROSS INDEX DIAGRAM

	1	2	3	4	5	6	7	8	9	10	11	12	13	14	15	16	17	18	19	20	21	22	23	24	25
A																									
B																									
C		6			5				4					3					2						1
D																									
E																									
F																									
G			7			8			9					10					11						12
H																									
J																									
K																									
L			18			17			16					15					14						13
M																									
N																									
O																									
P			19			20			21					22					23						24
Q																									
R																									
S																									
T			30			29			28					27					26						25
U																									
V																									
W																									
X			31			32			33					34					35						36
Y																									
Z																									

Land Surveyor / Firm / Address
Clint E. Andersen
WWC Engineering
51 N. 15th Street, Suite 1
Billings, MT 59101
 Telephone: (406) 894-2210

This corner record was prepared by me or under my direction and supervision.
 SEAL & SIGNATURE



Corner Name: Northeast Corner Section: 34 T 17N R 61W ; 6TH P.M. Cross-Index No.: V-17
 SBRPEPLS/PLSW: March 1994; PLSW January 1998